

Safexpert Installation MSI

Distribution as MSI packet

Version: 2021-05-06

Additional technical
information for
specialists

Safexpert



Contents

1. Short overview of the software distribution via MSI	2
2. Necessary steps	2
2.1. Unzipping the MSI packet.....	2
2.2. Customising the MSI-packet.....	2
2.2.1. Necessary settings for the DBCONNECTION parameter	3
2.2.2. AddLocal components	4
2.2.3. Additional optional parameters for DBCONNECTION	4
2.3. Parameters for uninstalling	5

1. Short overview of the software distribution via MSI

This document is an addition to the installation manual of Safexpert (see chapter **Installing Safexpert** in Safexpert HELP AND INFO CENTER).

Safexpert can be distributed automatically via Active Directory. The required MSI packet (Microsoft Installer) can be extracted directly from the Safexpert setup for this process.

2. Necessary steps

2.1. Unzipping the MSI packet

Create a link to the Safexpert setup file and add the output folder to the command line parameters:

`-ExtractSetup output folder`

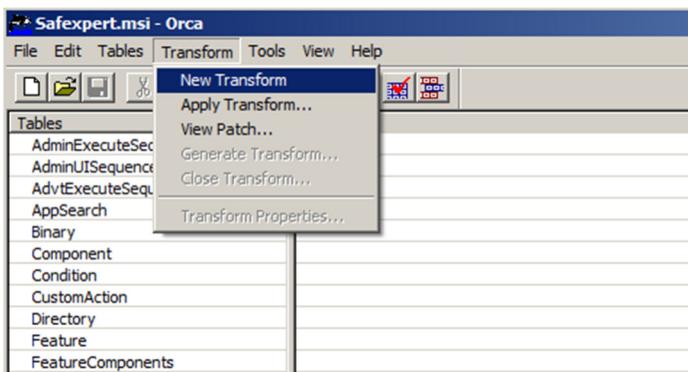
Start the setup via the link. The MSI file is then unzipped to the selected folder.

2.2. Customising the MSI-packet

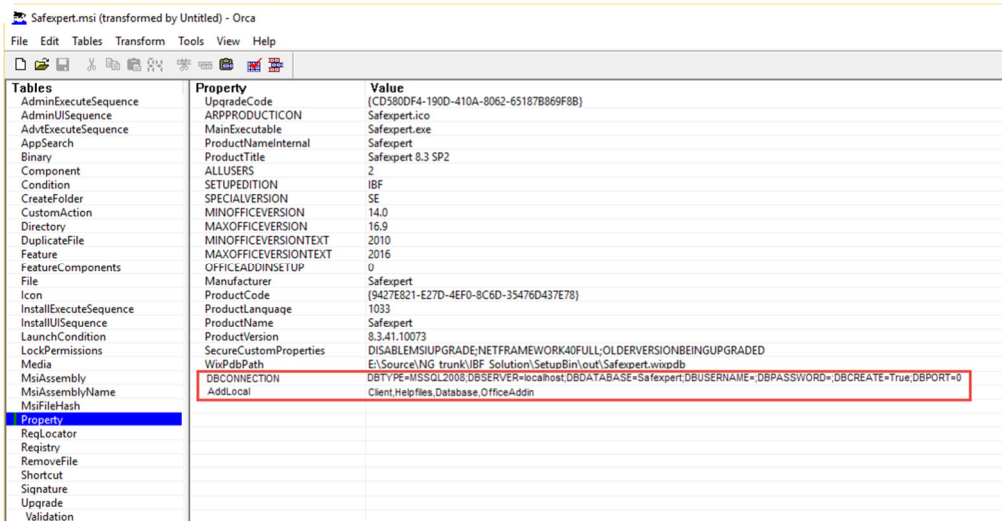
The extracted MSI-packet requires some additional settings. The **Orca MSI Editor**, for example, is a suitable tool for editing a MSI file.

Procedure

- 1 Open the file Safexpert.msi with a suitable MSI editor and select the menu item **Transform - New Transform**.

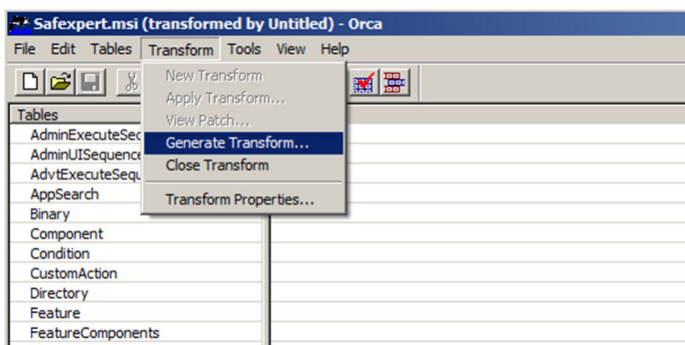


- 2 Add the corresponding entries in the **Value** column in Property **DBCNECTION** and **AddLocal**.



The necessary settings for **DBCONNECTION** can be found in chapter [2.2.1](#)
 The optional settings for **DBCONNECTION** can be found in chapter [2.2.3](#)
 The possible settings for **AddLocal** can be found in chapter [2.2.2](#).

3 Select **Generate Transform** in menu **Transform**.



- 4 Save the file with the desired name in the **Save Transform As** window. The file type **mst** is important here (for example: SafexpertConfig.mst).
- 5 Close **Orca**.
- 6 Open the **Windows prompt** and enter the following:
`msiexec.exe /i "C:\Temp\Safexpert.msi" TRANSFORMS="C:\Temp\SafexpertConfig.mst".`

Note: The specified path and the name of the mst-file are exemplary and may require modification.

2.2.1. Necessary settings for the DBCONNECTION parameter

The following parameters are mandatory for a successful installation. Separate the parameters with a semicolon.

Please note: Do not add a semicolon after the last parameter!

Setting	Description / Possible values
DBTYPE	database type. Possible values: VistaDB, MSSQL2008
DBSERVER	Database server

Setting	Description / Possible values
DBDATABASE	database (path to database in case of VistaDB)
DBPORT	Port
DBUSERNAME	User name
DBPASSWORD	Password
DBCREATE	Indicates whether a database should be created. Possible values: True or False
SETUP_LANGUAGE	Language for installation. Selected as default language for Safexpert (en, de, ...)

2.2.1.1. DBCONNECTION example

The following is an example of a possible configuration:

```
DBTYPE=MSSQL2008;DBSERVER=localhost;DBDATABASE=SAFEXPERT;DBUSERNAME=;DBPASSWORD=;DBC  
REATE=True;DBPORT=0;SETUP_LANGUAGE=de
```

Note: In the above example, DBUSERNAME and DBPASSWORD were left blank. This is true if Windows Authentication is used. Otherwise enter the corresponding USERNAME and PASSWORD here.

2.2.2. AddLocal components

Select the components to be installed. Separate the components with a comma.

Settings	Description / possible values
ADDLOCAL	Client,Database,HelpFiles,OfficeAddin

2.2.3. Additional optional parameters for DBCONNECTION

Parameter	Description
INSTALLLOCATION	Set this parameter to the directory in which Safexpert should be installed.
SETUPLANGUAGE_DE SETUPLANGUAGE_EN SETUPLANGUAGE_ES SETUPLANGUAGE_FR	Set one of these parameters to the value 1 for creating a link in the Windows start menu to the corresponding help file.
TERMINALMODE	Set this parameter to 1 to activate the terminal mode for the use under Windows Terminal or Citrix.
LICENSENUMBER	Use this parameter to set the license number. This information is required only for server installations since only the database is licensed for Safexpert. Clients obtain their license directly via the connected database.
LICENSEFILE	Set this parameter to the path to a license file so that it is automatically imported.
IMPORTDEMOPROJECTS	Set this parameter to 1 for importing demo projects.
IMPORTCOMPONENTS	Set this parameter to 1 for importing the component library.

2.3. Parameters for uninstalling

If you want to uninstall Safexpert use the following settings in addition to the parameters listed above:

Parameter	Description
REMOVEDATABASE	Set this parameter if the database should be deleted (only possible for VistaDB database).
REMOVECONFIGFILES	Set this parameter if Safexpert configuration files should be removed.