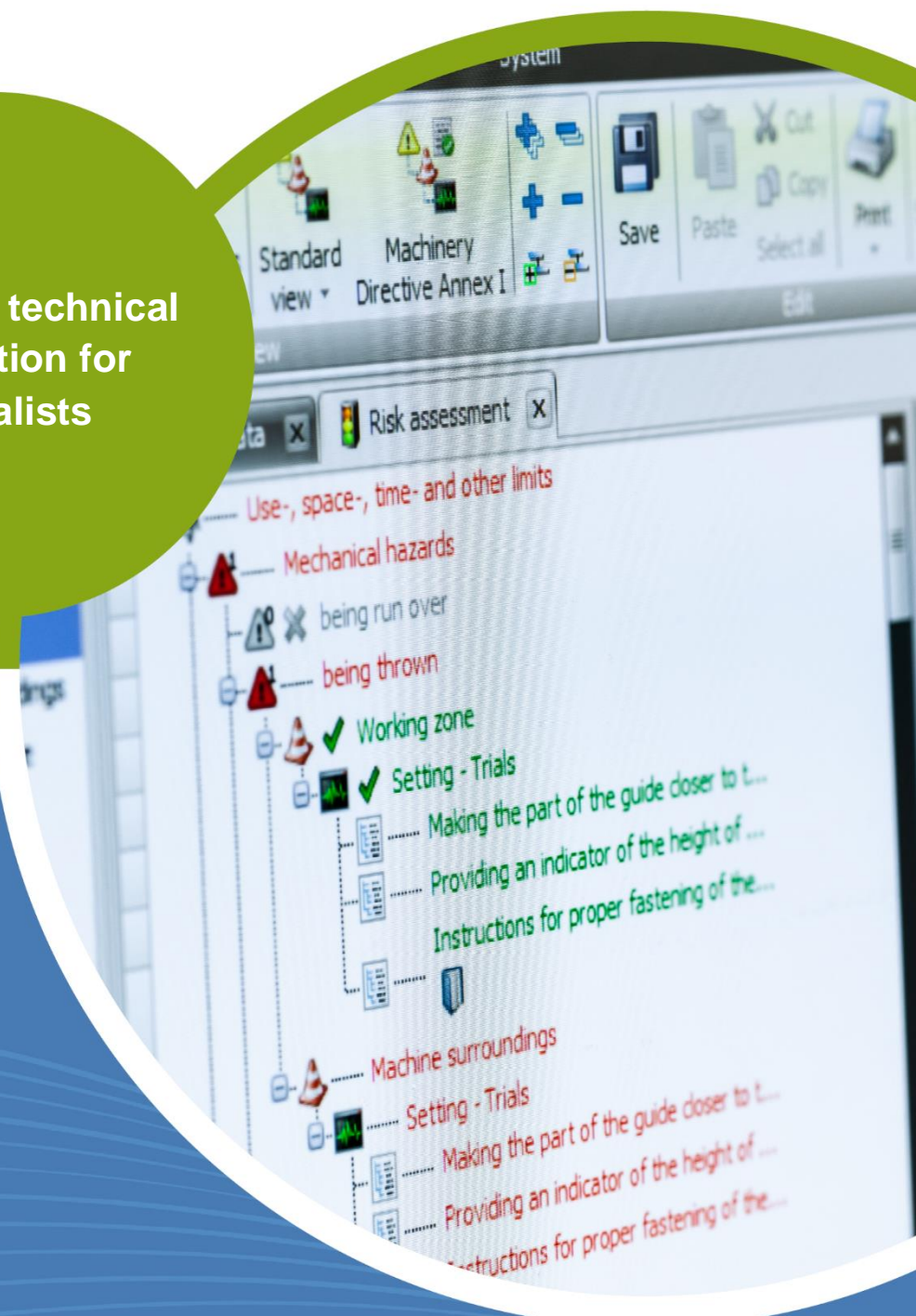


Relocating a local database (VistaDB)

Version: 2018-11-23

Additional technical
information for
specialists

Safexpert



General information

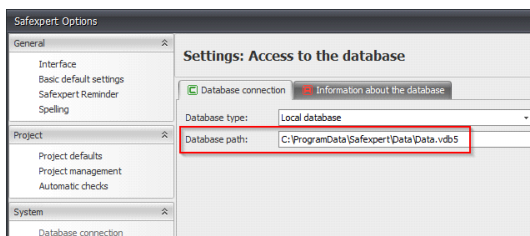
Until now, you have used Safexpert as a local installation with a local database (VistaDB, no SQL) on a PC. Now you receive a new PC and want to continue using Safexpert with your projects.

You have two options for how to do this:

1. Copying the database

On the current PC

- Find out where your local database is located:
System -> Options -> Database connection



Copy your database in the Windows File Explorer and paste it to a network drive or mobile device.

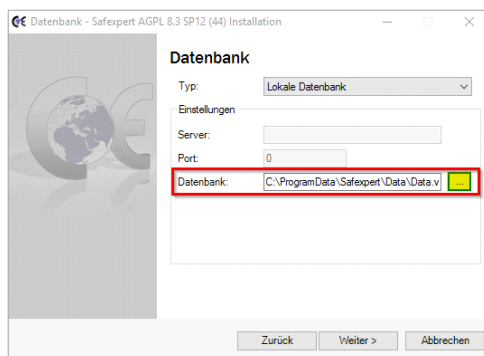
Please note the following:

The database can be several hundred megabytes in size. Check whether there is enough space on the target drive.

The **ProgramData** folder is "hidden" by default in Windows and must be made visible in the Explorer options.

On the target PC

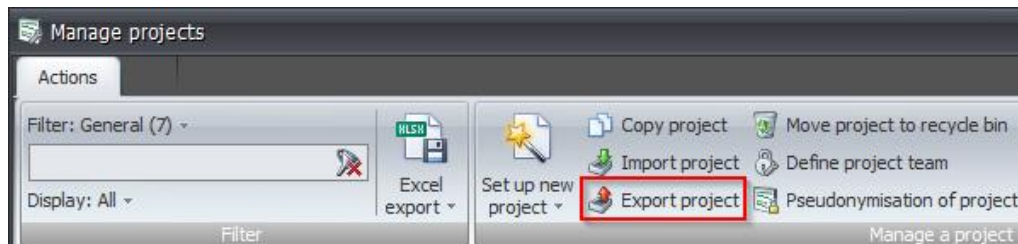
- Copy the database on your new PC to a directory of your choice.
- Download the current version of Safexpert -> <https://www.ibf.at/en/downloads/> and select the installation type **Complete (client and database)** when installing.
- In the **Database** step, select the path of your database:



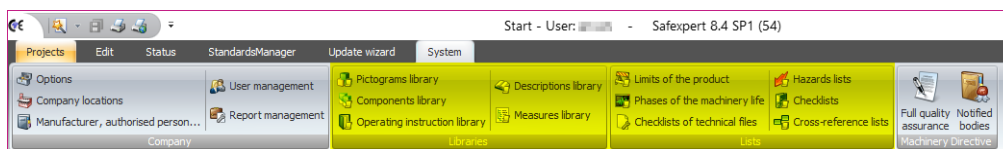
2. Reinstall database

On the current PC

- Download and install your current license file:
Update wizard -> Check availability -> Download and install offered license file
- Export the required projects to a network drive or external data medium:
Project management -> Select project -> Export project

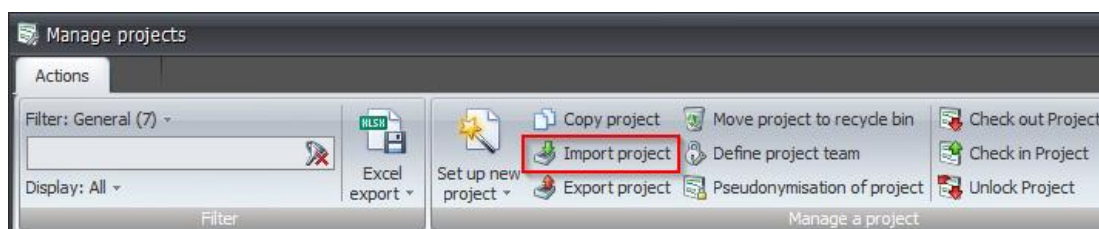


If you have created your own documents in the libraries and lists next to the Safexpert standard documents, these must also be exported.



On the target PC

- Download the current version of Safexpert -> <https://www.ibf.at/en/downloads/> and select the installation type **Complete (client and database)** during installation.
- Import projects from network drive or external data medium:
Project management -> Import project



- Possibly import your own libraries and lists.

Please note the following:

You can only export or import one project, library or list at a time. Multiple selection is not possible.

You are now using a new database which has to be registered with us. Please send us an e-mail with your license number to support@ibf.at.